

All rights reserved by Kelsey Design Associates
 No part of this publication may be reproduced, stored in any retrieval system or transmitted in any form or by any means without the prior permission of Kelsey Design Associates
 No scale of drawing - all dimensions to be checked on site and any discrepancies reported to Kelsey Design Associates
 Architecture = Interior Design = Master Planning = Project Management

SVP DRAINAGE TO M&E CONSULTANTS DETAILS

IT IS IMPERATIVE THAT FOR 182 MET FRAME STRUCTURAL WALLS WITH ONE RESILIENT BAR, THE BAR IS FIXED TO THE SIDE AS INDICATED ON THESE DRAWINGS IN ORDER TO ENSURE INTERNAL PLASTER TO PLASTER DIMENSIONS OF ROOMS ARE MAINTAINED, STUDY BEDROOMS MIN. 2.640

ROOM ARRANGEMENT INDICATIVE ONLY - REFER TO KDA ROOM LAYOUT DRAWINGS FOR ALL ROOM LAYOUT DETAILS

CURRENT REVISION INDICATED BY CLOUD

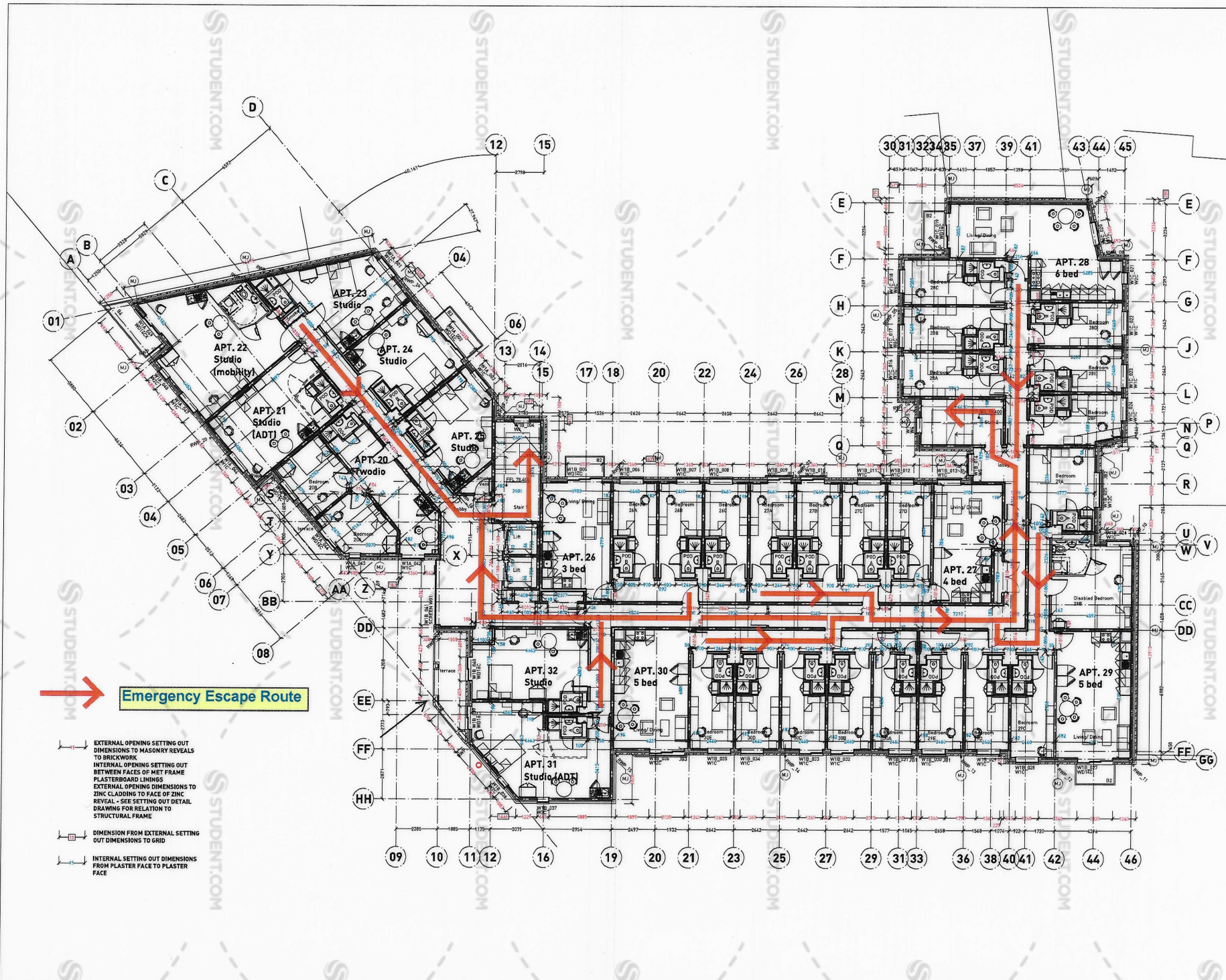
- Revision Date
- Rev A - 20/01/13 Internal Structural Ceiling Setting Out dimensions added, key to dimension added. Wall CD12 increased to structural 182 Wall DD142-48 connected to 182. Grid 17 connected 100mm towards grid 18. Note regarding resilient bar to be installed added. Rev B - 02/01/13
 - Revised for construction. Structural floor slab and associated gridline moved by 500mm to enable staircase wall to align as requested by PAW. External fire riser indicated to coordinate with M&E consultants requirements. Grids 17 & 18 to structural Met Frame. Also wall between Apt 44 and Apt 45 corridor revised to be structural Met Frame. All as requested by PAW. Fire riser added to Stair 2. Rev C - 08/01/13
 - The columns added, lift openings added, room numbers amended to have letter reference, mobility and ADT disabled bathroom rooms amended as instructed, finish floor levels added, movement joints and drainage points added. Rev D - 07/11/13
 - Narrow pool riser doors revised to 700mm & external fire enclosures removed as instructed by contractor. Detail of fire landing window to stair 1 & two25 revised, fire riser outlet box detail indicated, balcony references & a common cupboard to lift lobby added. Rev E - 20/01/14
 - Crack corridor door to block a limited block 6 cross corridor walls revised to 100mm PK.All as required by fire consultant. Window referencing added. Rev F - 06/03/14
 - Smoke vent added to Block A as required by B Control. Apt 22 pod access door indicated. Apt 22 disabled bathroom repositioned, kitchen & studio layouts indicated, window W1A_047 & adjacent brick pier revised to IPA requirement dimensioned to lift lobby added. Rev G - 20/04/14
 - Window W1A_049 to Apt 22 & adjacent brick pier revised to IPA requirement. Rev H - 18/06/14
 - Door revised to stair 1 and block A corridor to enable mechanical venting to block A smoke shaft.

- M Movement joint position
- Wall ties to movement joints to S.Eng details
- PAW to approve all movement joint locations



project no: 12/03
 project title: Impact 2
 location: Edward Street SHEFFIELD
 drawing no: 004
 drawing title: LEVEL 1 PLAN
 revision: H
 date: Sept 2013
 drawing status: FOR CONSTRUCTION

project title: Impact 2
 location: Edward Street SHEFFIELD
 drawing title: LEVEL 1 PLAN
 drawing date: Sept 2013
 scale: 1:100 @ A1
 drawing status: FOR CONSTRUCTION



Emergency Escape Route

- EXTERNAL OPENING SETTING OUT DIMENSIONS TO MASONRY REVEALS TO BRICKWORK
- INTERNAL OPENING SETTING OUT BETWEEN FACES OF MET FRAME PLASTERBOARD LININGS
- EXTERNAL OPENING DIMENSIONS TO ZINC CLADDING TO FACE OF ZINC REVEAL - SEE SETTING OUT DETAIL DRAWING FOR RELATION TO STRUCTURAL FRAME
- DIMENSION FROM EXTERNAL SETTING OUT DIMENSIONS TO GRID
- INTERNAL SETTING OUT DIMENSIONS FROM PLASTER FACE TO PLASTER FACE